

# Car-Sharing service in Vilnius city municipality



**VILNIUS**

The background of the slide features a series of thin, curved, concentric lines in a light gray color, creating a sense of motion or a circular path. These lines are more prominent on the left side and fade towards the right.

## Vilnius city municipality started Car-Sharing service in 2018

- Vilnius city municipality car park is not so small – 65 cars, 3 Vespa scooters, 20 bicycles and 5 electric scooters. If someone works in companies with a similar number of cars, they know best how long it takes to keep track of their use - to indicate how much time / kilometers they travel, to which customers the transport costs are attributed, to calculate the used fuel and to plan car maintenance.
- The main reason behind choosing Fleet Complete fleet management and car-sharing solutions was the possibility to achieve more effective usage of vehicles.













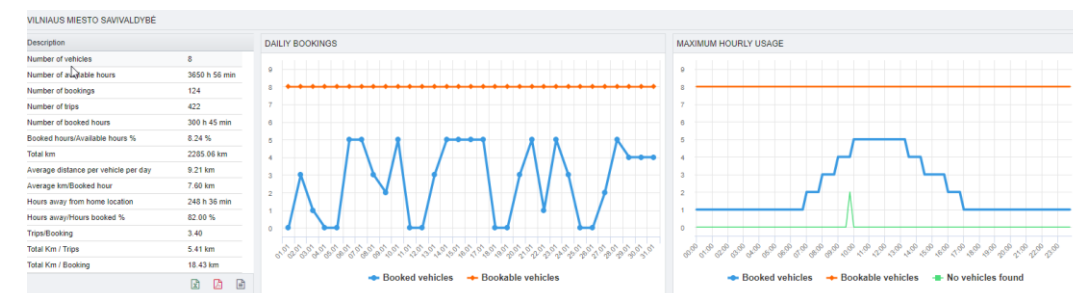
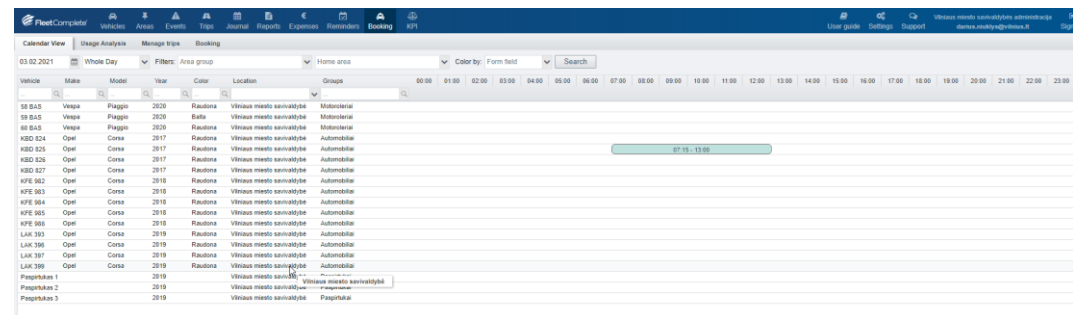
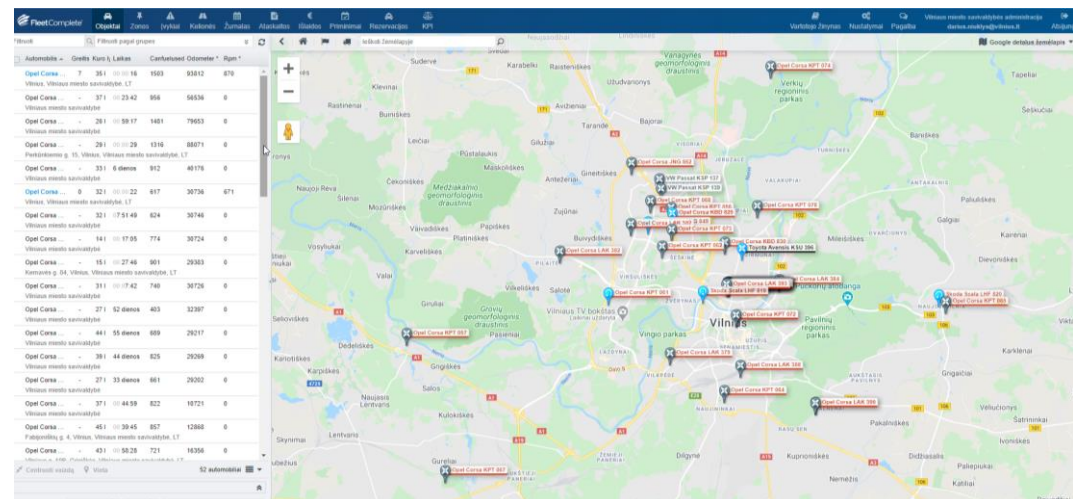




# How does Car-Sharing work?

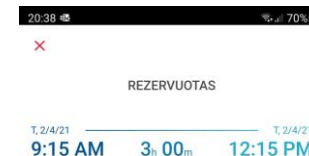
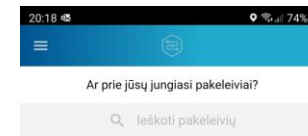
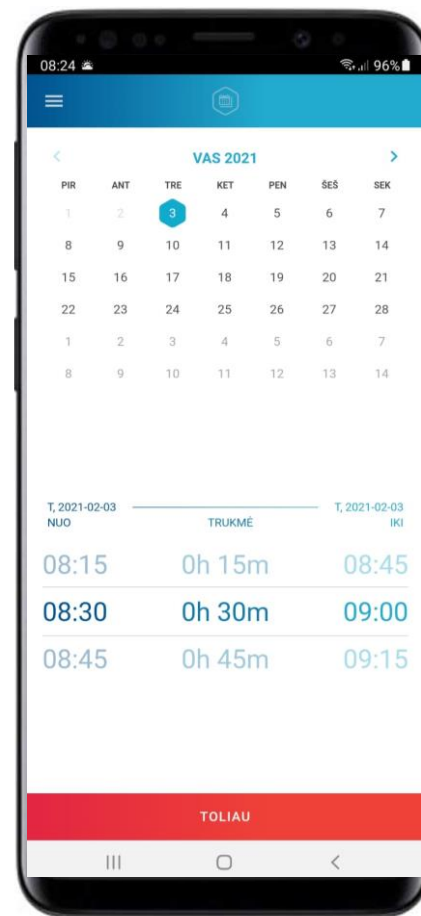
- Join app
- Reserve the car/Vespa scooter/ electric kick scooter
- Pick up the car/Vespa scooter/electric kick scooter
- Drive the car/Vespa scooter/electric kick scooter
- Return the car/Vespa scooter/electric kick scooter

# Web platform





# Carsharing mobile app



## BENEFITS

- To open and close the vehicle with the smartphone;
- Access to your vehicle is instant – you can book through the app and collect a car or scooter at any time;
- Submit real-time information -gps-location;
- The flexibility of booking a range of different vehicles, as they are needed;
- Employees don't have to remember where and when they drove, collect fuel checks, fill out accounting books;
- Less air pollution (help to reduce wastage and CO2 emissions by encouraging the sharing of vehicles);
- Less need for parking;



The background of the slide features a series of thin, curved lines in light gray and white, creating a sense of motion and depth. On the left side, there is a large red speech bubble with a white outline, containing the text 'Cost effectiveness'.

## Cost effectiveness

- The solution significantly exceeded expectations - it not only automatically transmits data on mileage, fuel consumption, but also helps to analyze work efficiency and accurately determine transport costs. The system can also show the exact location of the car at a particular time;
- Reduced number of cars;
- Reduced fuel consumption (approx 15 percent).



Thank You!  
Paldies!  
Ačiū!



For more  
information  
contact:

- **Darius Niuklys**

- Vilņas pilsēta pašvaldības administrācija  
Piegādes un transporta nodaļa  
Speciālists

e-pasts: [Darius.Niuklys@vilnius.lt](mailto:Darius.Niuklys@vilnius.lt)

tālrunis: +37069914523

- **Jānis Konovalčiks**

- Fleet Complete Latvija  
Autoparku efektologs

e-pasts: [janis.konovalciks@fleetcomplete.com](mailto:janis.konovalciks@fleetcomplete.com)

tālrunis: +37120044228