



WELCOME TO SMILTENE MUNICIPALITY

Smiltene, 28/09/2023

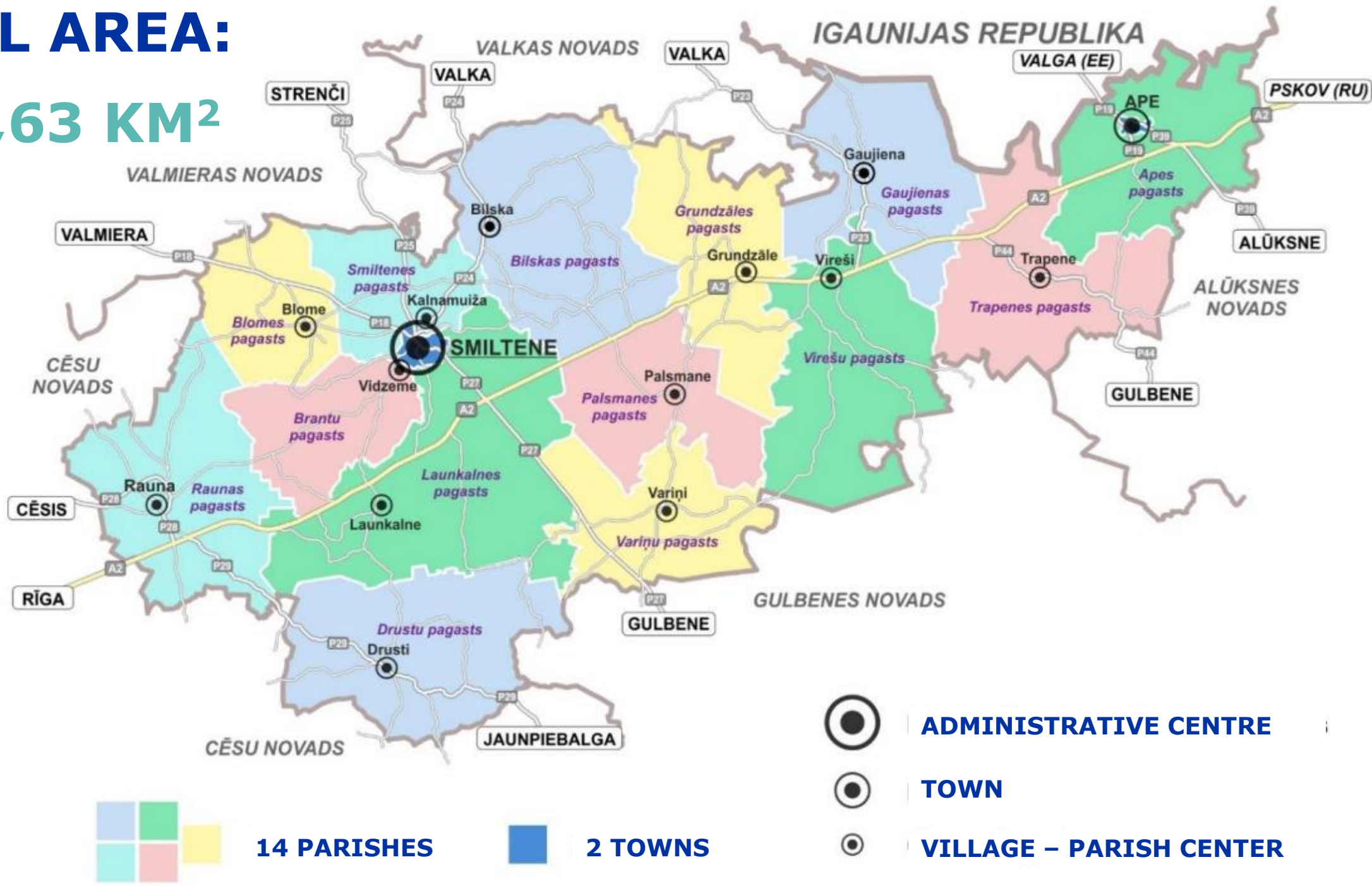
GENERAL INFORMATION





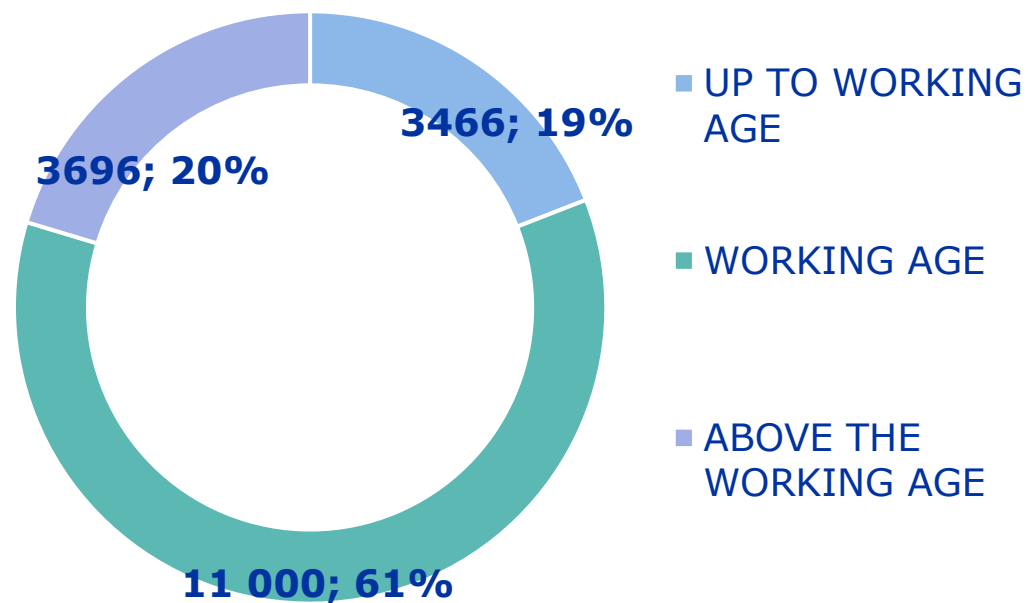
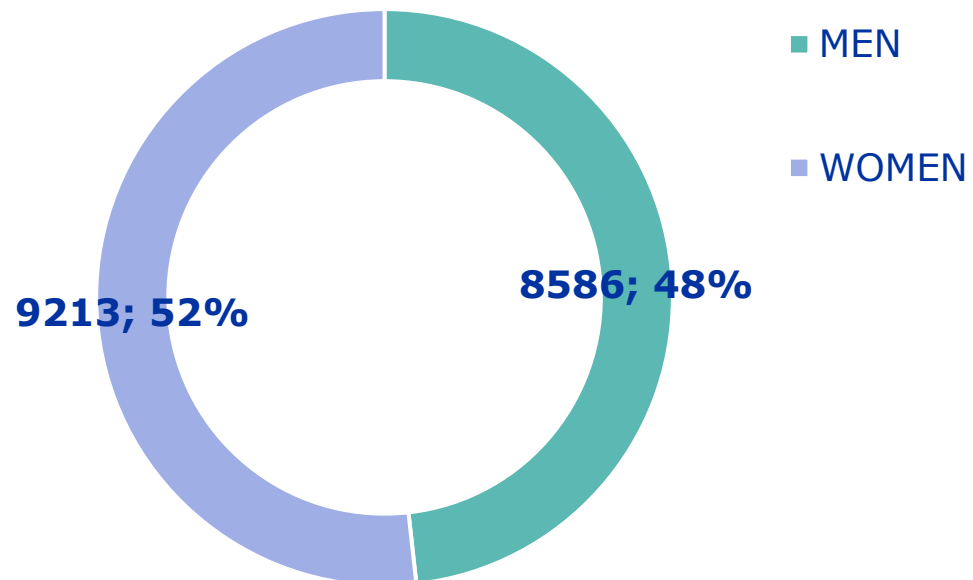
Smiltene municipality was established on July 1, 2021 by merging Ape, Rauna and Smiltene municipalities

TOTAL AREA:
1800,63 KM²

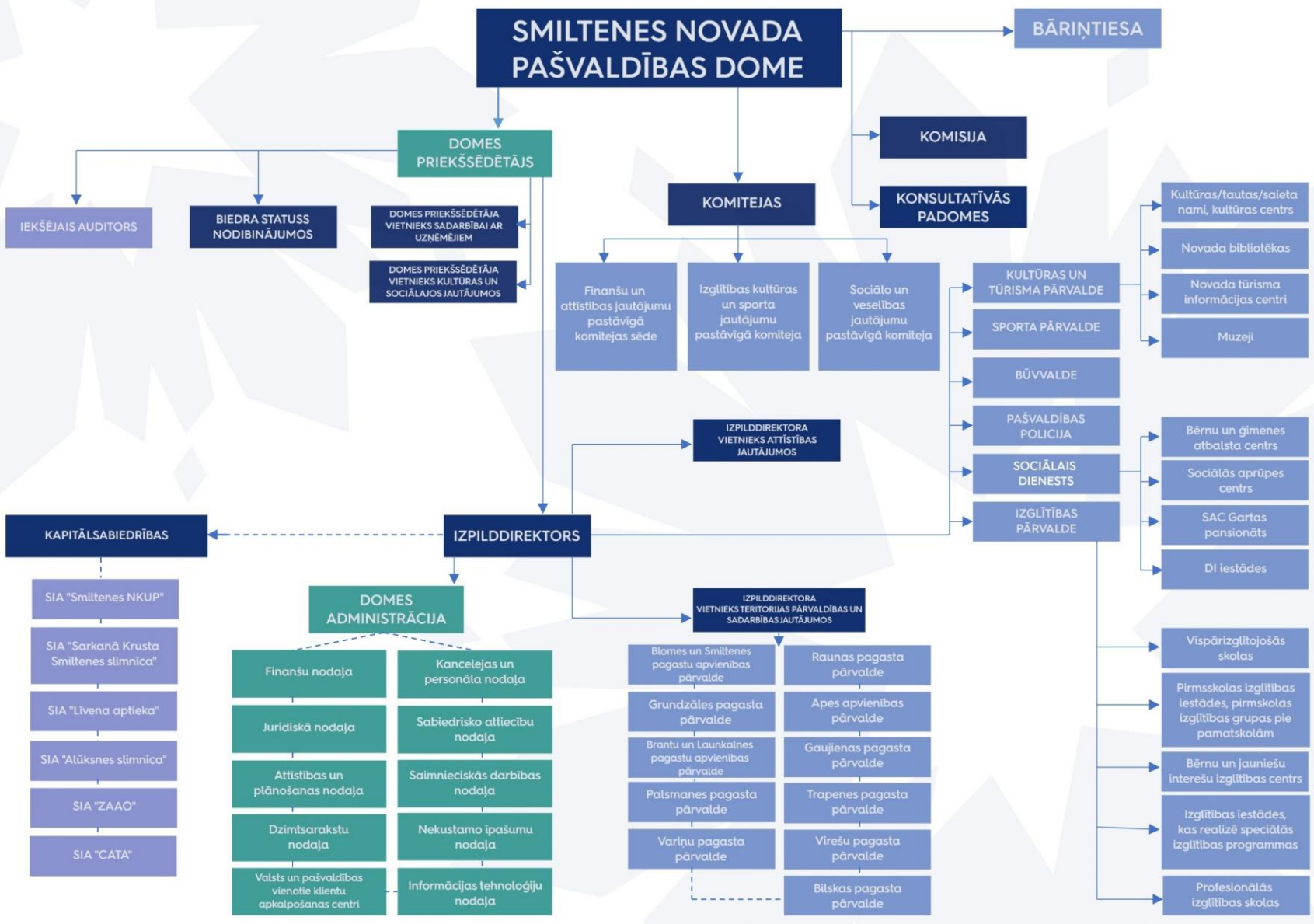


POPULATION

18 800



ADMINISTRATIVE STRUCTURE OF THE SMILTENE MUNICIPALITY



TOTAL NUMBER OF EMPLOYEES:
1201



MUNICIPALITY BUDGET 2023

■ OUTLAY ■ REVENUE ■ FINANCING



33 553 814 EUR

REVENUE

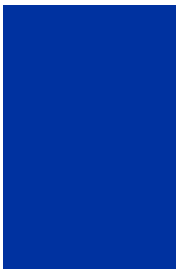
7 854 780 EUR

FINANCING

41 408 594 EUR

OUTLAY

16 507 569



4 249 290



1 172 639



2 478 286



4 107 440



294 452



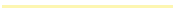
7 895 160



3 874 174



149 382



- EDUCATION
- ENVIRONMENTAL PROTECTION
- GOVERNANCE OF TERRITORIES AND BUILDINGS
- SOCIAL PROTECTION

- LEISURE, CULTURE AND RELIGION
- ECONOMIC ACTIVITY
- PUBLIC SECURITY AND PROTECTION
- GOVERNANCE





STRATEGICAL GOALS

LONG TERM DEVELOPMENT STRATEGY GOALS



Socially active, educated and inclusive local community

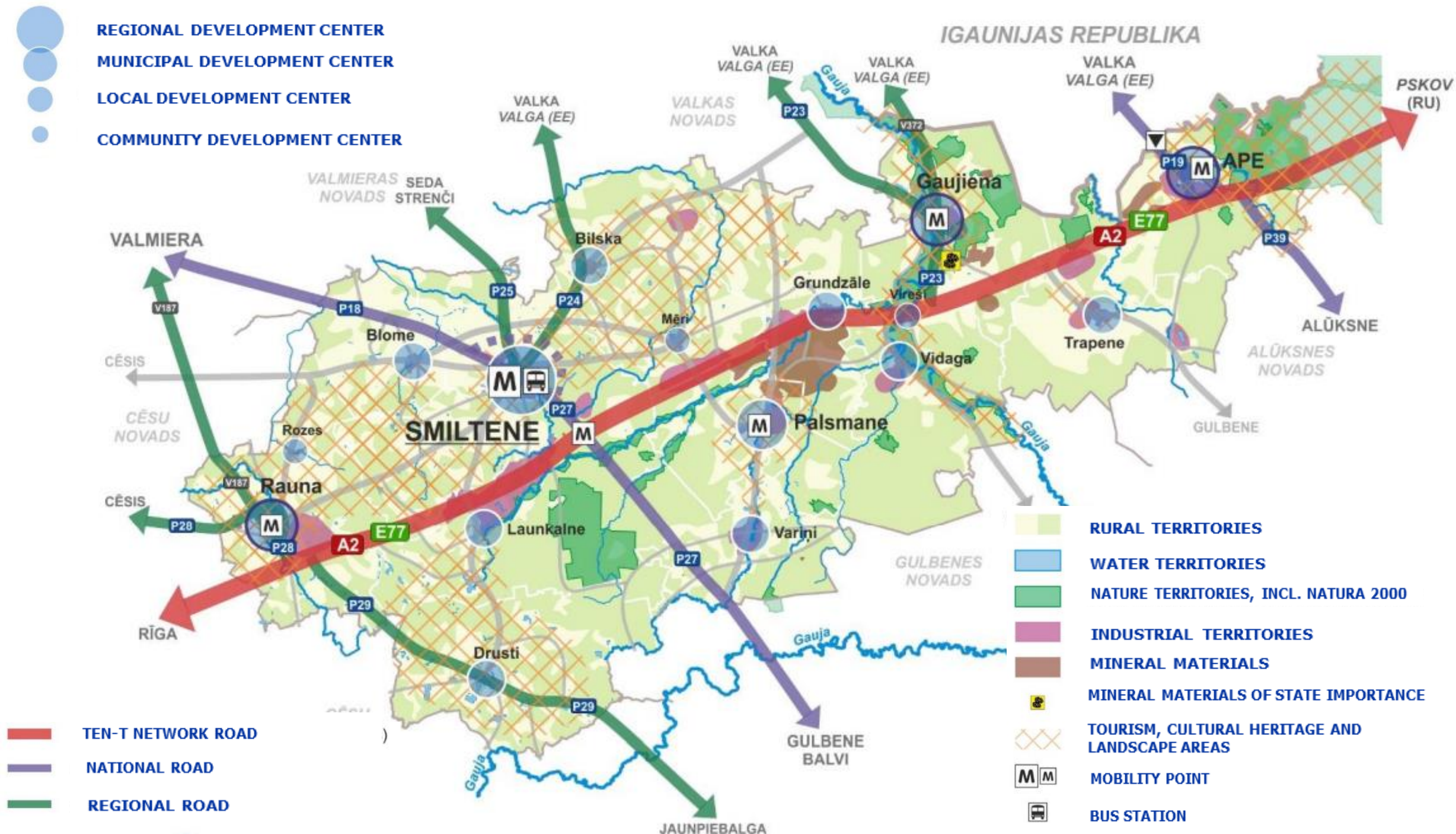


Dynamic and competitive economy



Sustainable and high quality living environment

REGIONAL DEVELOPMENT CENTER
 MUNICIPAL DEVELOPMENT CENTER
 LOCAL DEVELOPMENT CENTER
 COMMUNITY DEVELOPMENT CENTER





ENTREPRENEURSHIP

NUMBER OF ACTIVE ENTERPRISES

1813

COMPANIES WITH AN
ANNUAL TURNOVER OF
OVER 1 MILLION
EUROS:

56



MAJOR INDUSTRIES IN SMILTENE MUNICIPALITY

- Forestry and woodworking
- Road construction
- Retail and wholesale
- Agriculture
- Construction
- Manufacturing
- Services



TOP 10 COMPANIES BY ANNUAL TURNOVER

Madara '89

1. 171 915 936 EUR



2. 104 409 615 EUR

graanul invest

3. 70 783 967 EUR



4. 60 877 228 EUR



5. 28 733 146 EUR



6. 23 948 290 EUR



7. 21 967 805 EUR



8. 19 961 239 EUR



9. 16 125 214 EUR



10. 12 563 220 EUR



EDUCATION, CULTURE AND TOURISM



23 EDUCATIONAL INSTITUTIONS

- ✦ Elementary education - **9**
- ✦ Primary education - **2**
- ✦ Pre-school education – **3**
- ✦ Secondary education – **1**
- ✦ Special education – **2**
- ✦ Professional education centre
- ✦ Professionally oriented education- **4**
- ✦ Youth and children interest education centre
- ✦ Private education institution «Tautskola 99 baltie zirgi»



CULTURE & TOURISM

- ✦ Cultural institutions- **11**
- ✦ Public libraries – **14**; library structures – **4**
- ✦ Smiltene Municipality Museum in Mēri
- ✦ Smiltene cinema
- ✦ Tourism information centres– **3**
- ✦ Amateur art collectives- **65**



MAJOR COMPLETED AND ONGOING INVESTMENT PROJECTS

PROJECTS TO SUPPORT THE ENTREPRENEURSHIP



PROJECTS TO SUPPORT THE ENTREPRENEURSHIP



PROJECTS TO SUPPORT THE ENTREPRENEURSHIP



SMILTENE TOWN CENTER



SMILTENE TOWN CENTER



SMILTENE SECONDARY SCHOOL



DEINSTITUTIONALIZATION PROJECT IN SMILTENE



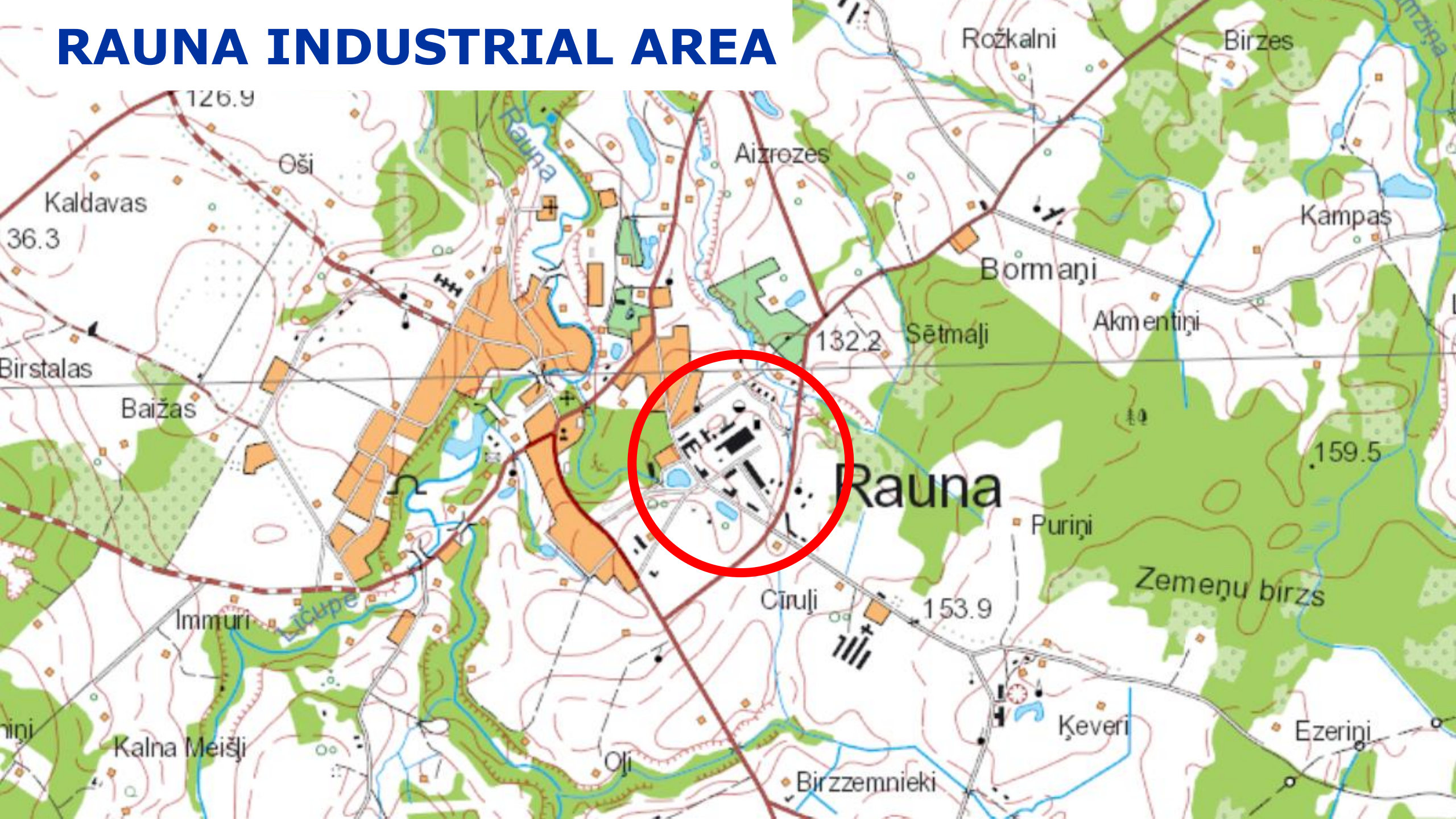
CRAFTS HOUSE IN APE

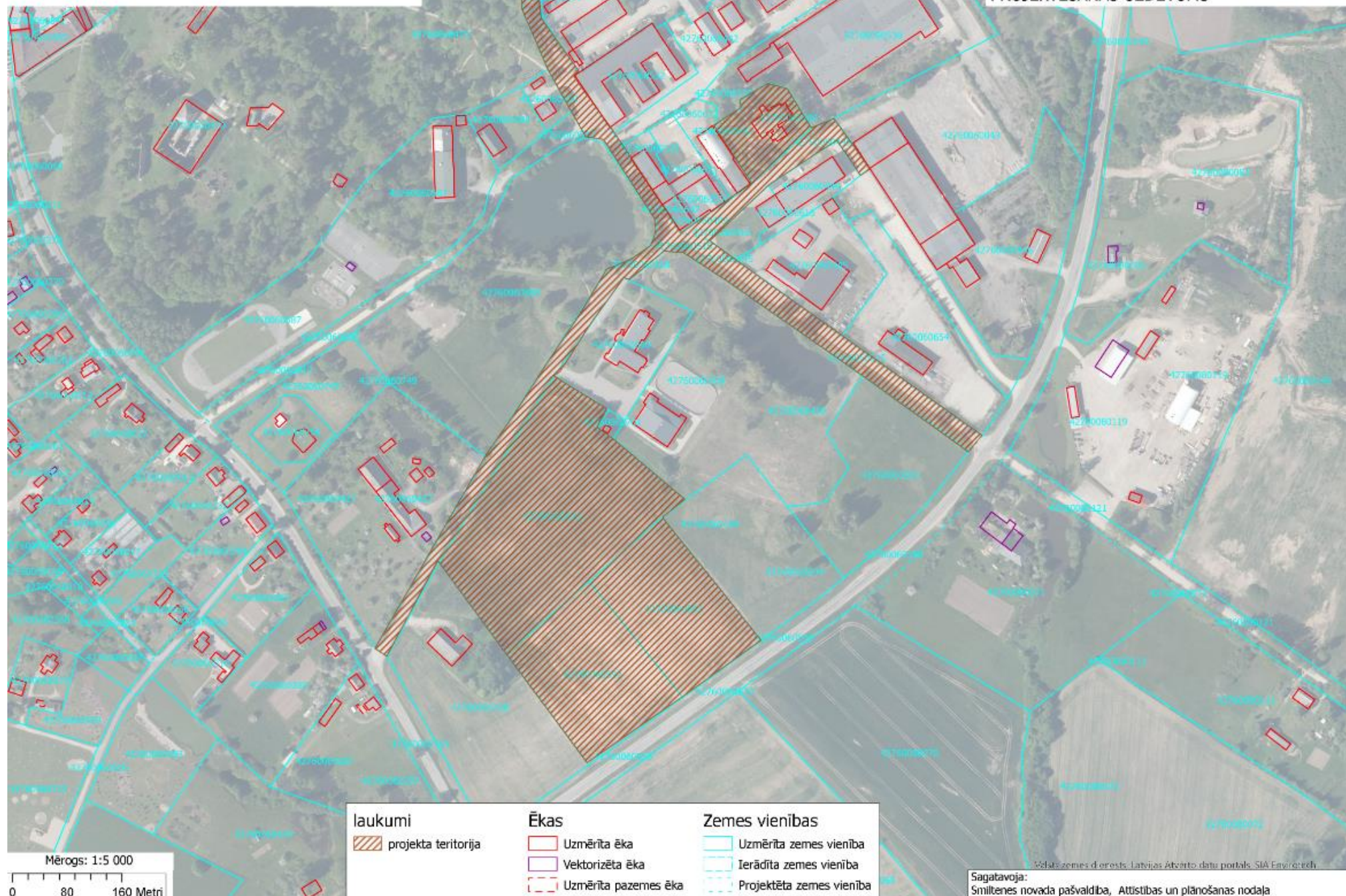




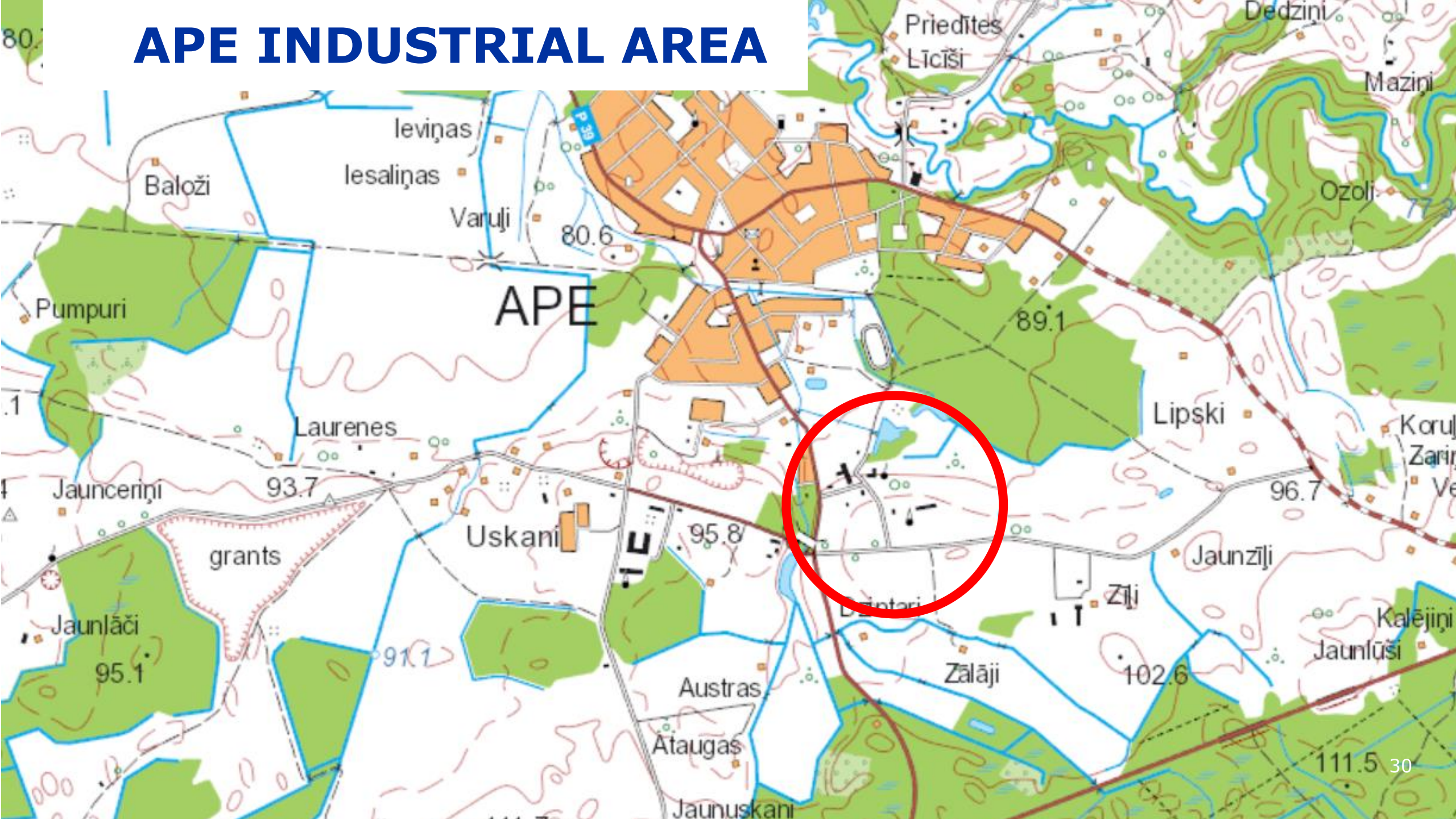
MAJOR FUTURE INVESTMENT PROJECTS

RAUNA INDUSTRIAL AREA



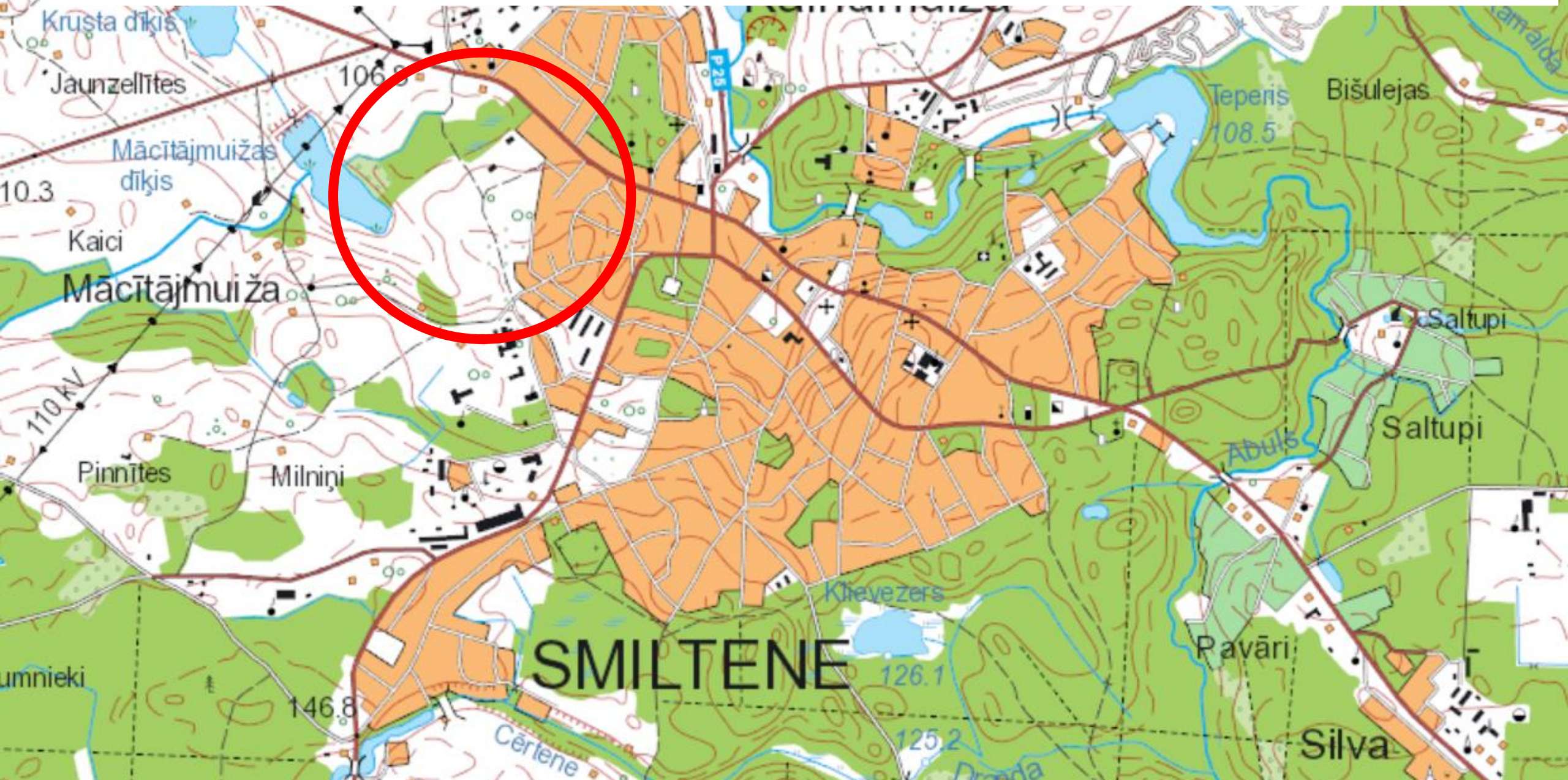


APE INDUSTRIAL AREA






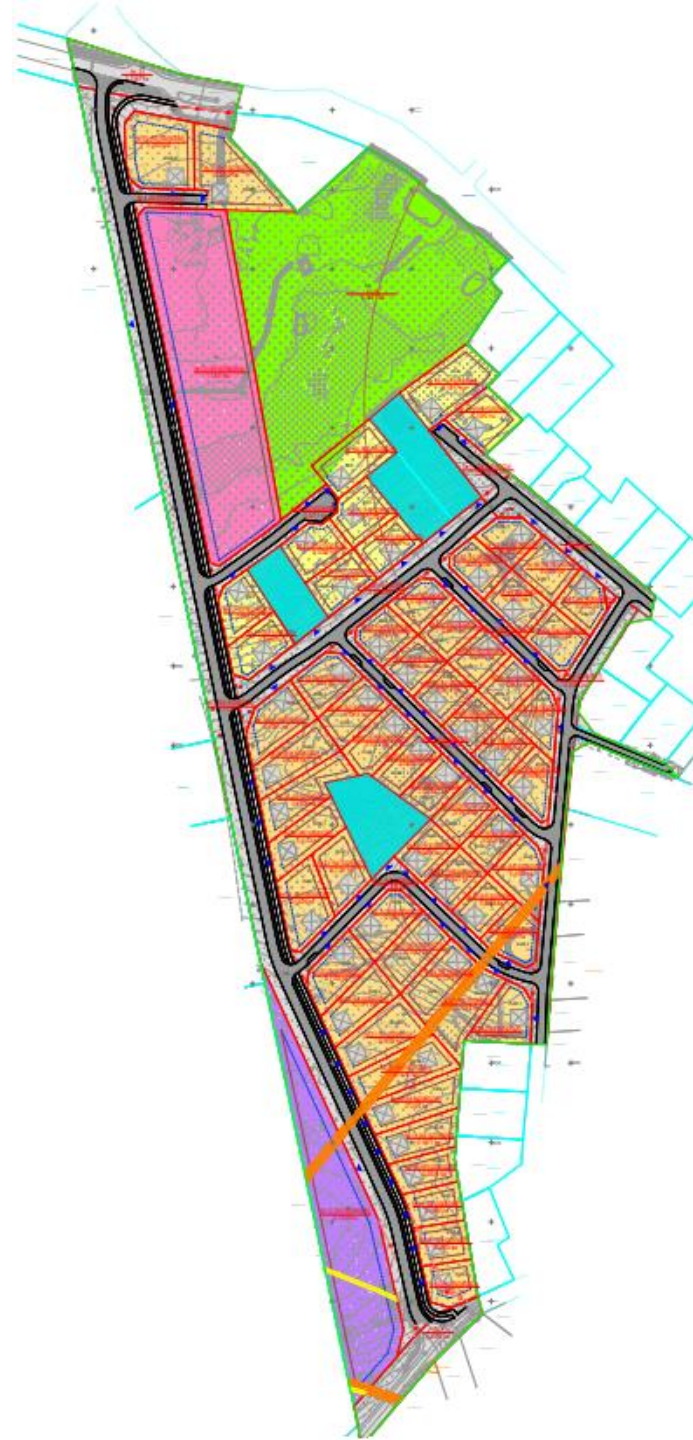


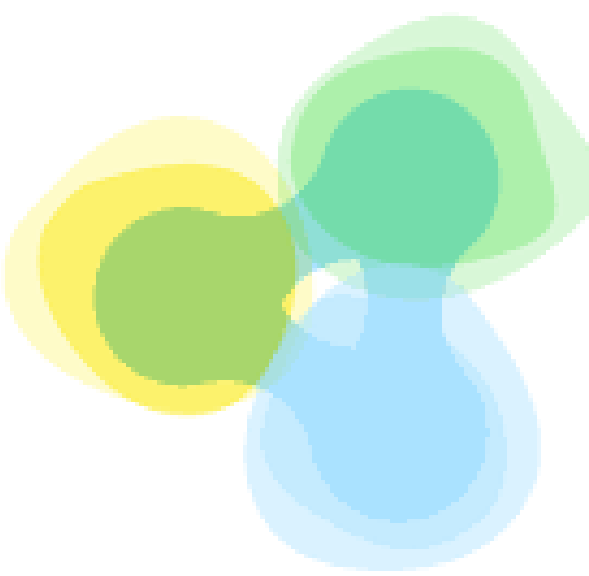
SMILTENE LIGHT INDUSTRY AND HOUSING AREA



Apzīmējumi

| | |
|---|--|
| DzS | SAVRUPMĀJU APBŪVES TERITORIJA |
| DzM-1 DzM-2 DzM-3 | MAZSTĀVU DZĪVOJAMĀS APBŪVES TERITORIJA |
| R | RŪPnieciskās apbūves teritorija |
| JC | Jauktas centra apbūves teritorija |
| TR | Transporta infrastruktūras teritorija |
| DA | Dabas un apstādījumu teritorija |
|  | Plānotā ielas brauktuve |
|  | Plānotā zemes vienības robeža |
|  | ESOŠA zemes vienība |





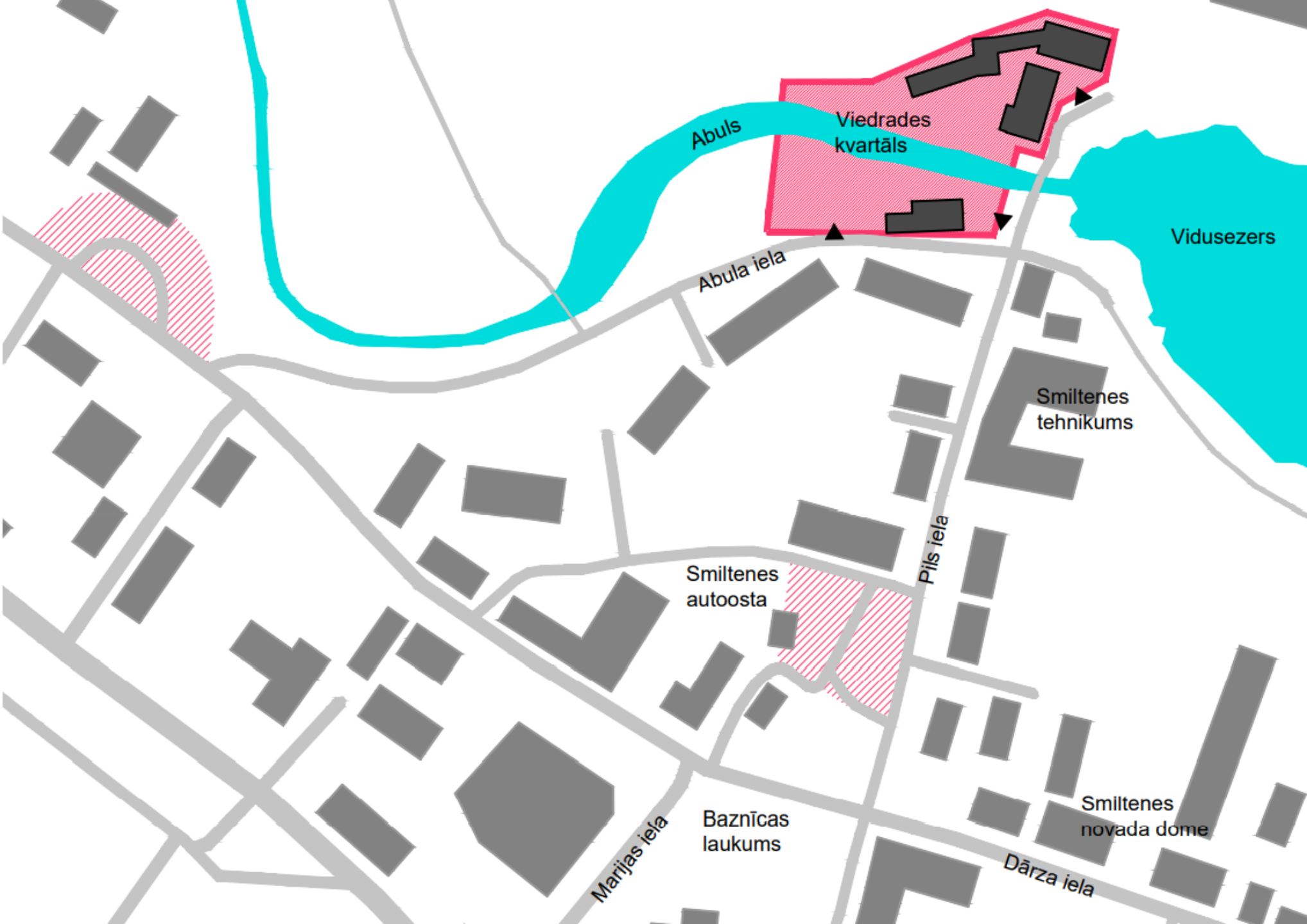
New European
Bauhaus 

**CREATIVE QUATER
PILS 9, SMILTENE**



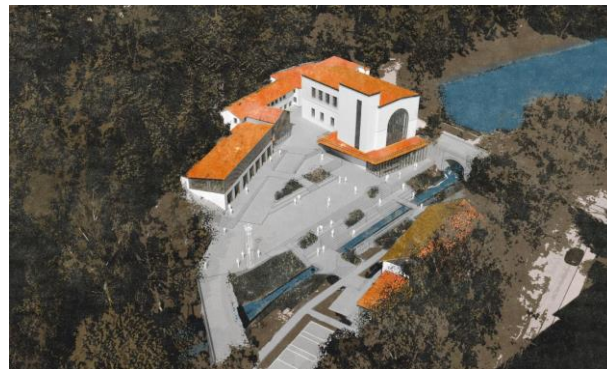
EXPLICATION

- ADJACENT BUILDINGS
- STREETS
- AREA OF THE CREATIVE QUATER
- BORDER OF THE CREATIVE QUATER
- PUBLIC PARKING AREAS
- WATER BODIES





ARCHITECTURAL SKETCH DESIGN COMPETITION



CURRENT FOCUS AREAS

- **Completion of the institutional adjustments after the regional reform**
- **Adjusting to the rapidly growing costs for goods, services and energy resources**
- **Preparing for attracting the EU funding for further developments
– industry, energy efficiency, infrastructure, housing**
- **Completing and managing ongoing development projects**
- **Setting up cooperation model between entrepreneurs and municipality**

The background features abstract geometric shapes in yellow and blue. A large yellow shape is in the top right corner, with several smaller yellow diamonds scattered around it. A blue diamond is also visible. The overall design is modern and minimalist.

SUSTAINABLE ENERGY AND CLIMATE ACTION PLAN



Covenant of Mayors for Climate

- ✓ **Signed by Smiltene Municipality based on decision made by Municipal Council on 2016**
- ✓ **Target 1: To decrease CO2 emissions by 40% by the year 2030**
- ✓ **Target 2: secure adaption to climate change**



- ✓ **Participation in international exchange programme within Covenant of Mayors for Climate Programme 2018/2019**
- ✓ **Visits to Milos (Greece) and Lecci (Italy)**



LIFE ADAPTATE

- ✓ **Project «LIFE ADAPTATE» 2017-2021**
- ✓ **Project includes activities in order to promote and implement different means of adaptation to climate change**
- ✓ **Pilot project – reconstruction project of the canal lock and cleaning of lake Vidusezers**

Climate action plan development



Stage one – identification of existing and potential climate risks and possible action identified



Stage two – presentation of potential actions and discussion on possible implementation



Stage three – presentation of the plan to the general public

SECAP 2020-2030 approved by the Smiltene Municipality Council in 2019

Climate Change Mitigation

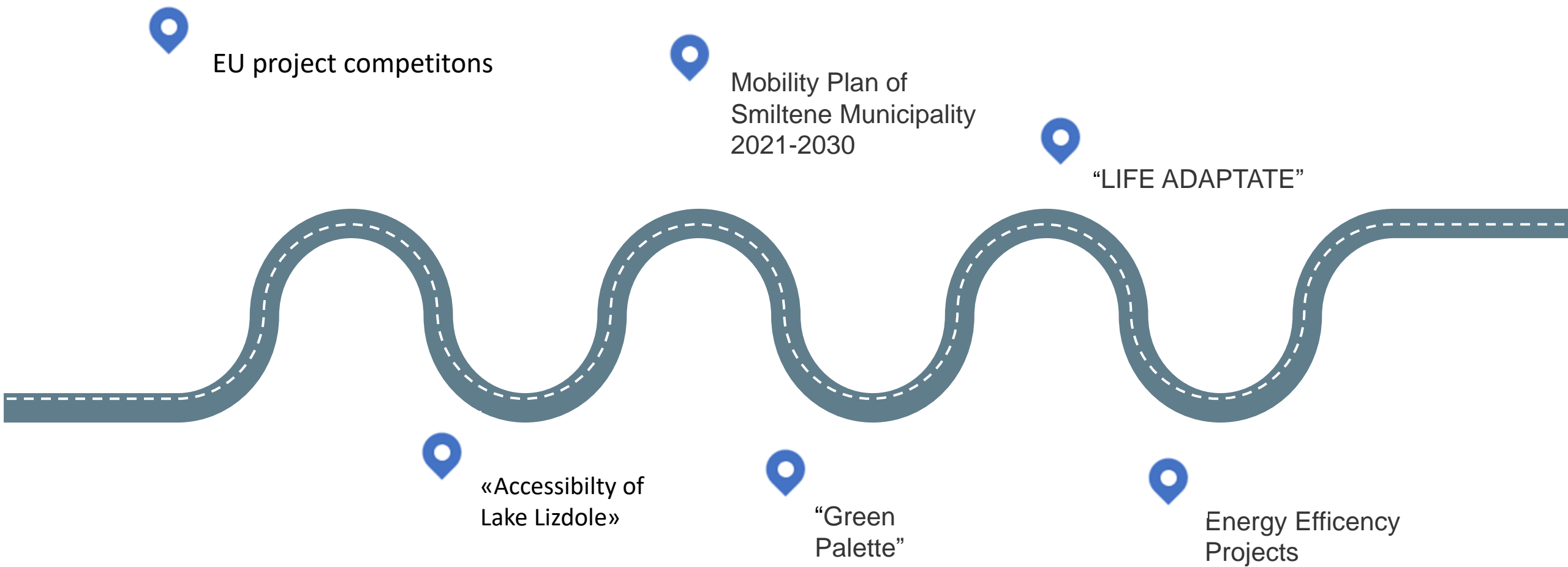
Klimata pārmaiņu mazināšanas pasākumi

| Energopārvaldība | | | | |
|--|--------------------------------------|--|--|--|
| 1.1. Energopārvaldības sistēmas izveide un ieviešana pašvaldībā | | | 1.2. Zaļā publiskā iepirkuma kritēriju piemērošana pašvaldības iepirkumos | |
| Ielu apgaismojums | | | Infrastruktūras attīstība | |
| 1.3. Ielu apgaismojuma modernizācijas ilgtermiņa stratēģijas izstrāde | 1.4. Ielu apgaismojuma modernizācija | 1.5. Ielu apgaismojuma uzstādīšana vēl neapgaismotajās ielās | 1.6. Pašvaldības atbalsts daudzdzīvokļu dzīvojamo ēku atjaunošanai | 1.7. Ēku infrastruktūras attīstības stratēģijas izstrāde |
| Enerģijas ražošana un patēriņš | | | | |
| 1.8. Atbalsts centralizēto siltumapgādes sistēmu saglabāšanai, jaunu patērētāju piesaistei | | 1.9. Siltumenerģijas uzskaites sakārtošana | 1.10. Siltumapgādes sistēmu efektivitātes uzlabošana | 1.11. Kurināmā kvalitātes uzlabošana |
| Transports | | | Sabiedrības informēšana | |
| 1.12. Videi draudzīgas pārvietošanās veicināšana | | 1.13. Atbalsts elektroauto ieviešanai | 1.14. Informācijas izvietošana uz enerģijas patēriņa rēķiniem un enerģijas patēriņa datu publicēšana | 1.15. Enerģijas dienu rīkošana |

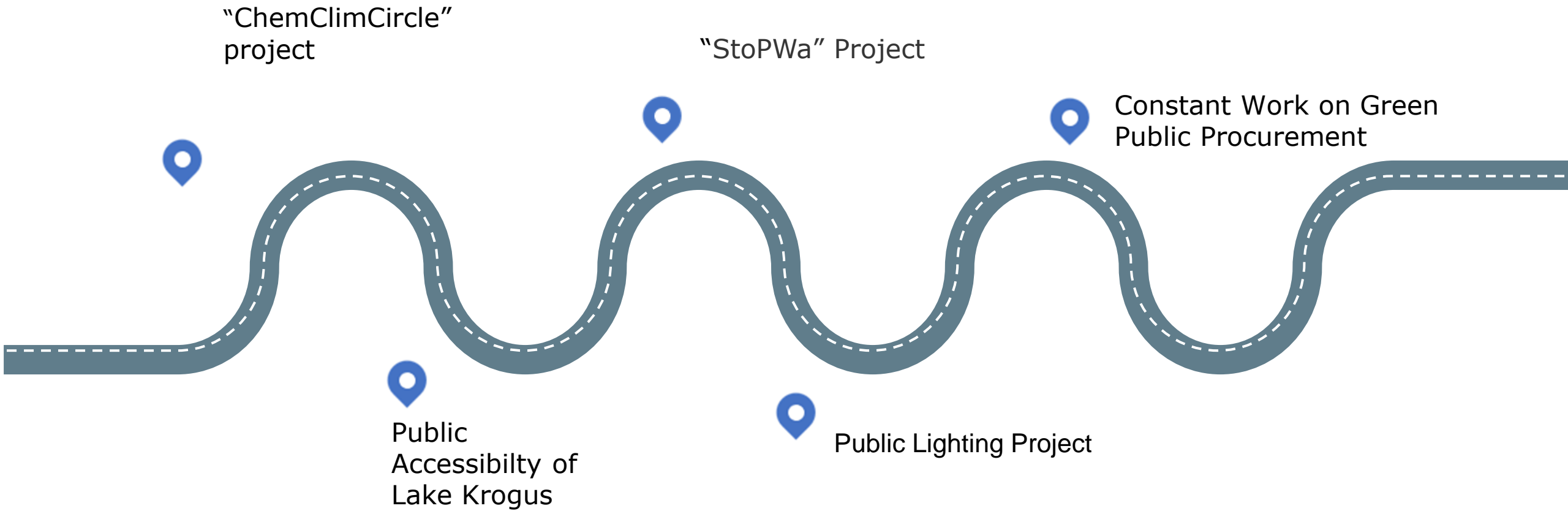
Adaption to Climate Change

| | | | | | |
|--|--|---|---|--|---|
| Pasākumi, lai pielāgotos klimata pārmaiņām | Būvniecība un infrastruktūras plānošana | | | | Lauksaimniecība, mežsaimniecība, zivsaimniecība |
| | 2.1. Iekšpagalmu sakārtošana, atbilstoši operatīvā transporta vajadzībām | 2.2. Kanalizācijas sistēmas uzlabošana | 2.3. Apzināt lietus ūdens sistēmas vājās vietas | 2.4. Infrastruktūras, kas atrodas applūstošās teritorijās apzināšana | 2.13. Meliorācijas būvju sakārtošana |
| | Veselība un labklājība | | Civilās aizsardzības un katastrofas pārvaldīšanas plānošana | | |
| | 2.8. Vietējās sabiedrības veselības uzlabošana | 2.9. Vietējo uzņēmumu izglītošana par klimata riskiem | 2.5. Dažādu ar klimata parādībām saistītu risku apzināšana, informācijas uzkrāšana, kartēšana | 2.6. Informatīvas kampaņas par ugunsdrošību, kūlas dedzināšanu u.c. | 2.7. Mežu ugunsgrēku risku mazināšana |
| | Bioloģiskā daudzveidība un ekosistēmu pakalpojumi | | | Tūrisms un ainavu plānošana | |
| | 2.10. Bebru populācijas kontrole | 2.11. Invazīvo sugu apkarošana | 2.12. Abula ezeru kaskādes aizaugšanas mazināšana | 2.14. Publisko peldvietu un to piekļuves sakārtošana | 2.15. Noēnojuma uzlabošana Smiltenes pilsētā |

Implementation of the plan and sources of the finance



Plāna īstenošana, plānotā finansējuma piesaiste (II)





Smiltenes novads
sanāk!

THANK YOU!

Dārza Street 3, Smiltene,
Smiltene Municipality, LV-4729
+371 64707588
+371 20022348

