



Welcome to Häme
Region.



Häme is a unique place.

Nowhere else in Finland do nature and cultural landscapes speak together as impressively.

With us, you can enjoy clean air, water, green surroundings, human-built cultural layers as well as good services and modern vitality in the same breath.

In Häme, nature is present everywhere, including in the city. That's why we can happily say to everyone: Go to the forest!

Developing the future.

Häme offers strong growth platforms for entrepreneurship. We think about the future through internationality and working partnerships.

Our location in the middle of the most populated Finland enables a natural place for versatile higher education activities.

Professional competence, bioeconomy, technology and well-being are important subject areas for us.

Our research and development know no national or international boundaries. When creating something new, the whole world is open.



Many things to see and experience.





From craftsmanship and long traditions to high-level research and innovations.



Kanta-Häme shortly.

Approximately **170 000** habitants.

12. largest region in Finland.

3 districts

11 municipalities,

3 of them are cities.

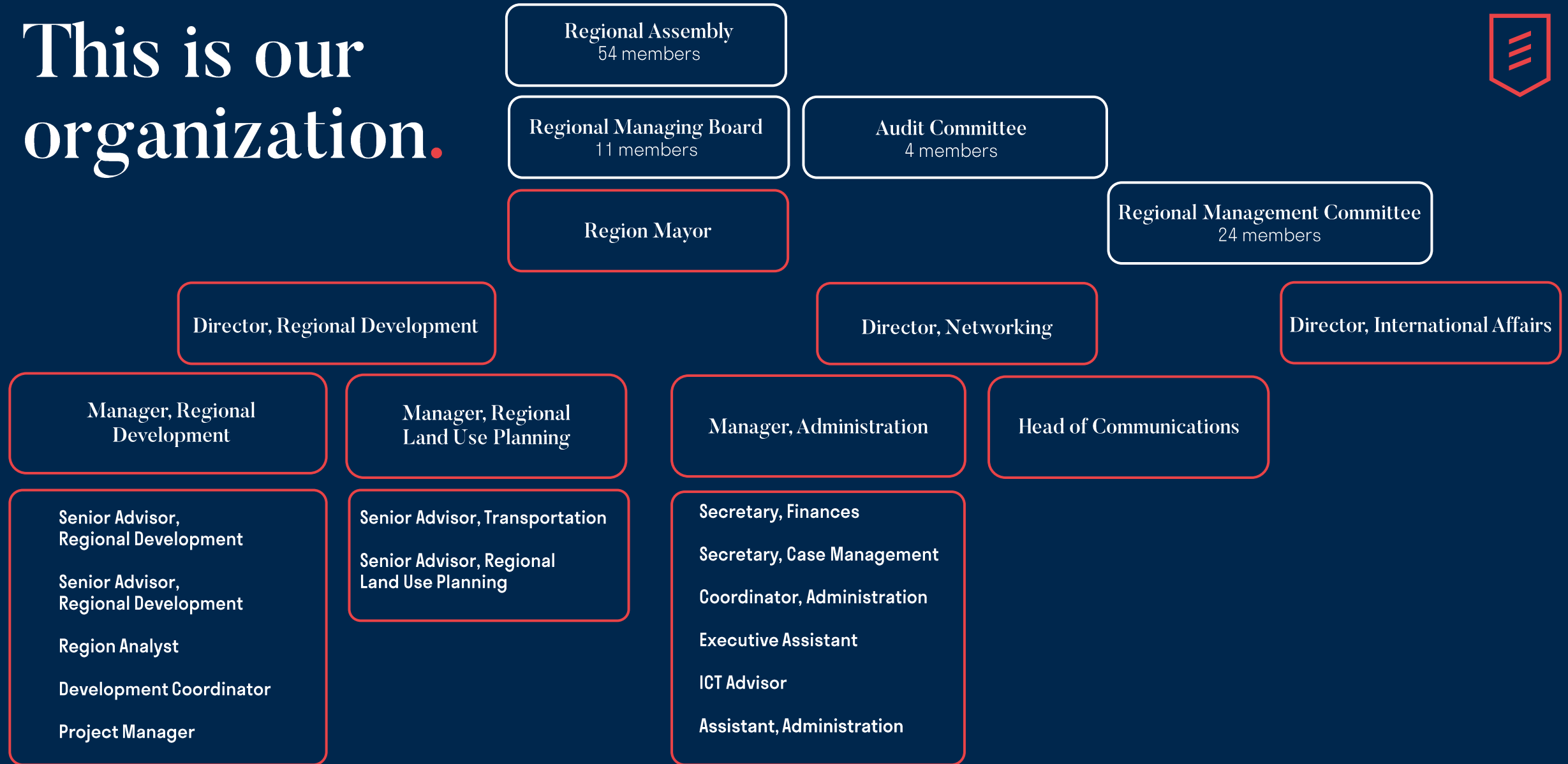


Regional Council of Häme



Rooted and close
to everyday life.
We are an influencing expert
and developing organization.

This is our organization.



Serving Kanta-Häme Region.



We bring together the Regional Council of Häme's democratically elected administration with employed public office personnel.



Burning for Expertise.

Motto tells about our mindset and approach to work.



Decision-making in the regional level



Regional Assembly 54 members

- Highest decision-making body of the Council.
- Members are municipal councilors of the member municipalities.
- Responsible for creating a regional will and the definition of policy both regarding to regional development and regional land-use planning as well as protection of interests.
- Differs from all other organizations of the regional level as members are elected and chosen directly by the citizens.

Regional Managing Board 11 members

- Directs the practical work of the Regional Council.
- Elected by the Assembly. Comprised of 11 members as the region has 11 municipalities.
- Preparing and introducing initiatives concerning all important measures taken to realise the regional development programme and vision, as well as other matters requiring the consideration of the Assembly.
- Executes the decisions.



Our Core Task.

We are a statutory municipal corporation owned by **11 municipalities of the Kanta-Häme region.**

The focal points of our operations are centered on the **supervision of interests, cooperation** and **development** in accordance with our goals, domestically and internationally.

Our core tasks are regional development and regional land use planning. These include different kind of developing and planning assignments.

We direct regional development by the law and regulations. We take care of the preparation of the regional plan and its up-to-dateness and development.



Supervision of Regional Interests.



We are sharp, capable, prepared and strongly argumentative supervisor of regional interests.

We live international everyday life, we recognize the opportunities of EU policy and participate in the discussion between Finland and the European Union.

We also recognize the central processes and players in national politics – who to influence and with whom.

Häme EU Office in Brussels promotes the vitality, international visibility and competitiveness of the Kanta-Häme region and its actors through activities related to the European Union and European cooperation.





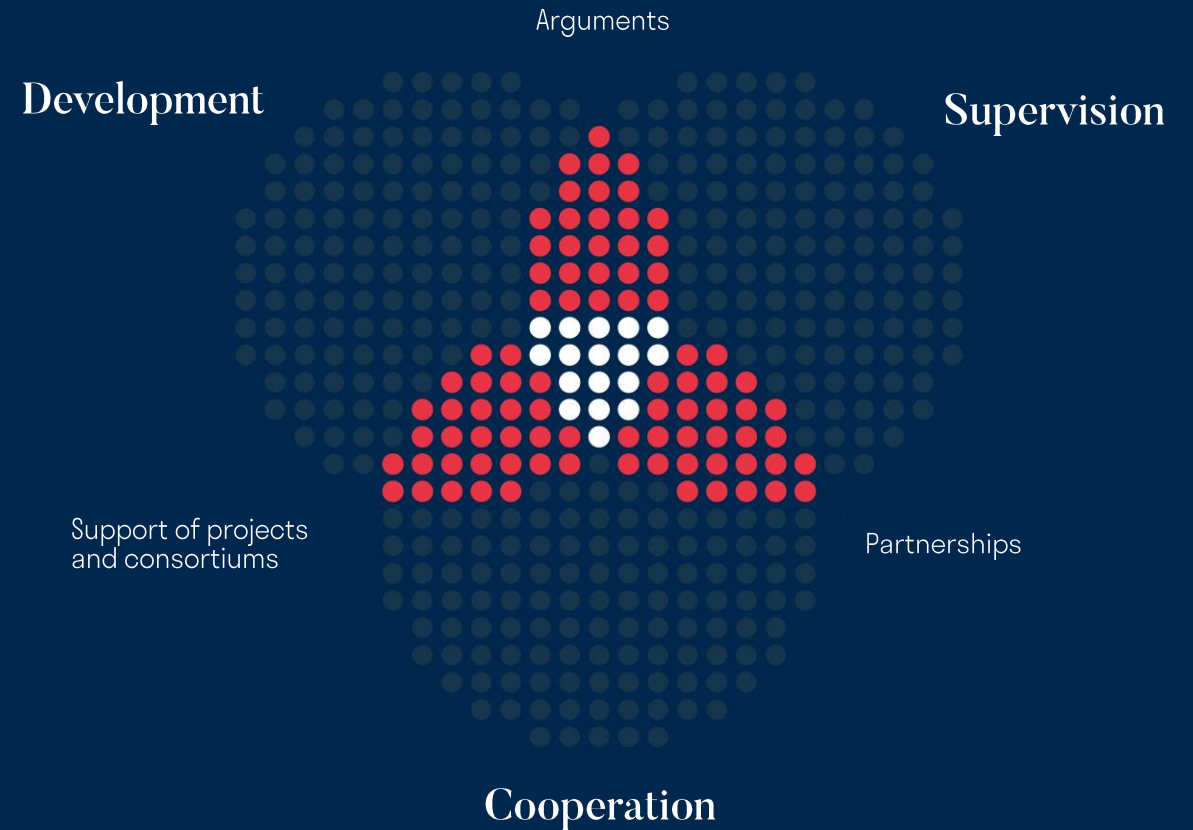
Collaborator.

We recognize vital actors for growth and combine and steer their resources efficiently. These actors in our region, all around Finland and internationally include e.g.

- central businesses
- municipalities
- development organizations
- educational institutions
- research institutions
- financiers

We systematically construct networks and platforms that are essential for competitiveness, we produce cooperation services for tasks agreed on by a three-hubbed region.

We believe in the power of democratic decision-making.





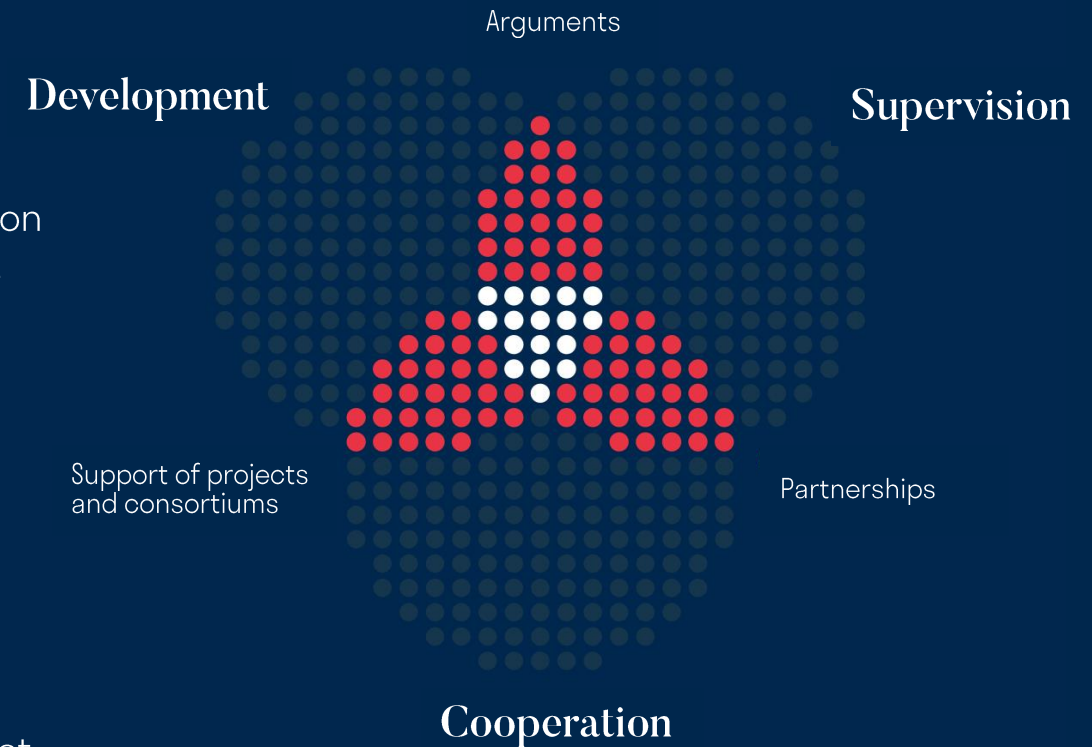
Enabler of Development.

We strategically steer the region's project portfolio and assemble the implementation force behind the selected focal points of the Green Growth Region regional development programme.

The preparation of the upcoming funding programme period, the selection of projects to be funded, and the support of project consortiums for the utilization of external sources of funding all aim towards a shared goal.

We create preconditions for growth and a foundation for a sustainable way of life and development. We promote growth and sustainability via regional land use plan, transport system plan and other planning instruments.

Some times we make difficult choices when compiling the contents of development more determinedly. We recognize the region's strengths that require development efforts in order to renew and strengthen our regional economy.



Innovation and Skills Finland 2021–2027

We grant national and EU funding for development and innovation projects, that support the competitiveness, internationalization and growth of the region and business life, as well as the strengthening of competence. It is also possible to apply funding for the preparation of international projects.

The funding is directed to the development of the region via Green Growth Region – regional development plan 2022–2025 and Smart Specialization Strategy.

In the previous programme period we funded 48 projects from the European Regional Development Fund (ERDF) with 8 207 161 euros.





Sustainable Growth and Employment 2014–2020

Here is the amount of the funded projects of the programme period 2014–2020 and the division of the funds. Funding was distributed from the European Regional Development Fund (ERDF).

Line of Action	Funded Projects	Funds in Euros
L1 Competitiveness of SMEs	7	1 207 813 euros
L2 Producing and utilizing new knowledge and skills	30	5 074 350 euros
L8 REACT EU	11	1 924 998 euros
In total	48	8 207 161 euros

*Projects funded by the Regional Council of Häme



Information Management Supports Decision-making

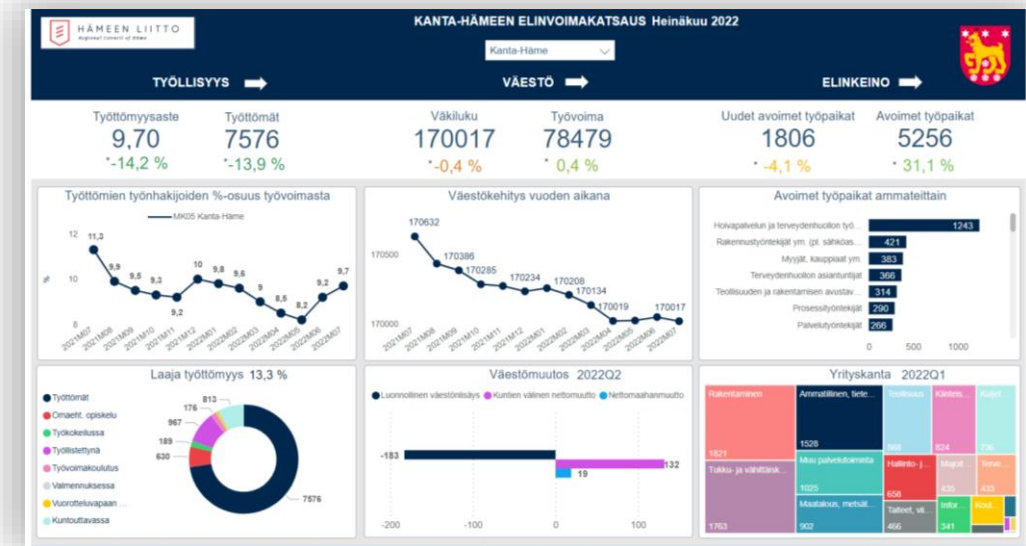
Our goal is to be the Kanta-Häme region's leading expert in information management, which widely serves the development of the municipalities.

To support information management we have developed a vitality overview tool which brings together the region's population, employment and business statistics. Comparison between municipalities and regional municipalities has been made easy.

The review provides the quick reader with an at-a-glance follow-up of key changes and developments related to vitality.

The information in the review describes issues that affect the lives of every resident and tells about the direction in which the development of the municipality, regional municipality or the region is heading.

In addition to the support service related to information management, we aim to stimulate discussion about the factors affecting vitality.





Green Growth Region Häme.

A new way of thinking and doing things.

Regional Development Programme 2022–2025.



Joint strategy document of actors, developers and organizations of the region.
This is the Kanta-Häme region's smart specialization strategy.

Our ambition is to systematically build ecosystems and consolidate regional RDI activities and expertise and develop the related support infrastructure, leaning on strong leading businesses and cooperation closely with the corporate interface and other stakeholders.

Green Growth RDI

- Cooperation as a prerequisite for a successful circular economy
- A pioneer region of sustainable food systems
- Smart services and production processes in renewing business
- Smart, responsible and sustainable design

Green Growth Expertise, Employment and Engagement

- The diverse and enabling future world of work and employment opportunities
- Future skills and continuous competence development
- We will need international talents to succeed in global competition

Green Growth Infrastructure

- Smoothly running daily life and easy mobility for all as objectives
- New ways of housing, living and working



Smart Häme 2022–2025

Smart specialisation themes



CROSSCUTTING THEMES

Climate Actions
Digitalisation
Smart Infrastructure
Skills and Competencies
International Collaboration

Circular Natural
Resources and
Material Cycles

Smart
Services and
Processes

Sustainable
Food
Systems

Smart and
Sustainable
Design

**Project / Development target
Focused RDI & EDP activities**

RDI: Research, Innovation and Development
EDP: Entrepreneurial Discovery Process



Häme-portfolio



A project database acquired and maintained by the Regional Council of Häme, which stores information on all development projects in the region.

Häme-portfolio can be used to prepare reports and summaries of projects, e.g. by theme, by regional development priorities, by funding source or according to implementing organizations. Projects can be viewed by municipality and regional municipality.

In addition to monitoring, the Häme-portfolio is also an excellent tool for compiling project ideas. It can be used to anticipate future project needs, reveal missing development activities and avoid duplication.

Häme-portfolio is an open database.





Häme EU Office.

Kanta-Häme region's own EU-office in Brussels

Häme EU Office provides services in Brussels



Häme EU Office facilitates and enables the internationalization of Kanta-Häme region.

Our goal is to be agile and meet the needs of actors in Kanta-Häme region in matters relating to the European Union and European collaboration.

Häme EU Office in Brussels exists specifically for the benefit of actors in Kanta-Häme region.





HÄMEEN LIITTO
Regional Council of Häme



Burning for Expertise.